

# GANJA

Oil Tanker



## GENERAL DATA

Date updated:	<b>August 27, 2021</b>
Vessel's name (IMO number)	<b>Ganja (9813565)</b>
Date delivered/Builder (where built)	<b>Dec 29, 2016/Nizhniy Novgorod, Russia</b>
Flag/Port of Registry	<b>Azerbaijan/BAKU</b>
Call sign/MMSI	<b>4JRS/423457100</b>
Type of vessel	<b>Oil Tanker</b>
Type of hull	<b>Double Hull</b>

## OWNERSHIP AND OPERATION

Registered owner - Full style	<b>Caspian Marine Services Ltd. Craigmure Chambers, Roadtown, Tortola. Virgin Islands, British</b>
-------------------------------	--

## CLASSIFICATION

Classification society	<b>American Bureau of Shipping</b>
Class notation	<b>A1, Oil Carrier, ESP, Restricted Service, AMS, ACCU, CRC(I), Ice Class E0</b>

## DIMENSIONS

Length overall (LOA)	<b>140.85 Metres</b>
Length between perpendiculars (LBP)	<b>136.95 Metres</b>
Extreme breadth (Beam)	<b>16.70 Metres</b>
Moulded depth	<b>6.00 Metres</b>

## TONNAGES

Net Tonnage	<b>2,026.00</b>
Gross Tonnage / Reduced Gross Tonnage (if applicable)	<b>5,075.00 / 3,718.00</b>

## LOADLINE INFORMATION

Freeboard	<b>1.80 Metres</b>
Draft	<b>4.20 Metres</b>
Deadweight	<b>7,017.00 Metric / Tonnes</b>
Displacement	<b>9,483.00 Metric / Tonnes</b>
FWA/TPC at summer draft:	<b>101.00 Mm / 15.00 Metric Tonnes</b>

## CREW

Number and nationality of Officers:	<b>8 / Azerbaijan</b>
Number and nationality of Crew:	<b>6 / Azerbaijan</b>

## BALLAST

Ballast Pumps	<b>2 / Centrifugal / 430 Cu. Metres/Hour</b>
Ballast Eductors:	<b>2 / Water Jet / 70 Cu. Metres/Hour</b>

## DREDGING EQUIPMENT

Number of cargo tanks and total cubic capacity (max% per company policy: 98%, 97%, 96% or 95%) excluding slops tanks	<b>6 / 7,907.38 Cu. Metres</b>
Number of slop tanks and total cubic capacity (max% per company policy: 98%, 97%, 96% or 95%):	<b>2 / 282.90 Cu. Metres</b>

**CARGO HANDLING AND PUMPING SYSTEMS**

How many grades / products can vessel load / discharge with double valve segregation	<b>2</b>
Are there any cargo tank filling restrictions? If yes, specify number of slack tanks, max s.g., ullage restrictions etc.	<b>No. To provide an efflux velocity at the loading pipe outlet in a tank not more than 1 m/s at the initial loading stage a loading rate for each cargo tank should not exceed 120 m<sup>3</sup>/h, while a loading rate for the slop tanks should not exceed 65 m<sup>3</sup>/h.</b>

Loaded per manifold connection	<b>1,200 Cu. Metres/Hour</b>
Loaded simultaneously through all manifolds	<b>1,800.00 Cu. Metres/Hour</b>

**VAPOR EMISSION CONTROL SYSTEM (VECS)**

Is a vapour return system (VRS) fitted?	<b>Yes</b>
Number/size of VECS manifolds (per side):	<b>1 / 250 Millimetres</b>

**VENTING**

State what type of venting system is fitted	<b>Pressure and Vacuum Valves</b>
---	-----------------------------------

**CARGO MANIFOLDS AND REDUCERS**

Total number/size of cargo mani – fold connections on each side:	<b>2/250.00 Millimetres</b>
What type of valves are fitted at manifold	<b>Electrical</b>
What is the material/rating of the manifold	<b>StSt/ANSI B16.5</b>
Does vessel comply with the latest edition of the OCIMF 'Recommendations for Oil Tanker Manifolds and Associated Equipment'?	<b>Yes</b>
Distance between cargo manifold centers	<b>920 Millimetres</b>

**HEATING**

Cargo Tanks:	<b>Steam Coils / Yes / Mildsteel</b>
Slop Tanks	<b>Steam Coils / Yes / Mildsteel</b>
Maximum temperature cargo can be loaded / maintained:	<b>61.0 °C / 141.8 °F / 61 °C / 141.8 °F</b>

**WINCHES**

Forecastle: No.	<b>2</b>
No. Drums	<b>Single Drum</b>
Motive Power	<b>Electric</b>
Brake Capacity	<b>45.40 Metric / Tonnes</b>
Type of Brake	<b>Tape</b>

**ANCHORS/EMERGENCY TOWING SYSTEM**

Number of shackles on port/starboard cable	<b>8/9</b>
--	------------

**LIFTING EQUIPMENT/GANGWAY**

Derrick/Crane description (Number, SWL and location)	<b>Cranes: 1 x 3 Tonnes Center of Manifold area</b>
Does vessel have a portable gangway? If yes, state length	<b>Yes, 6 Metres</b>

**PROPULSION**

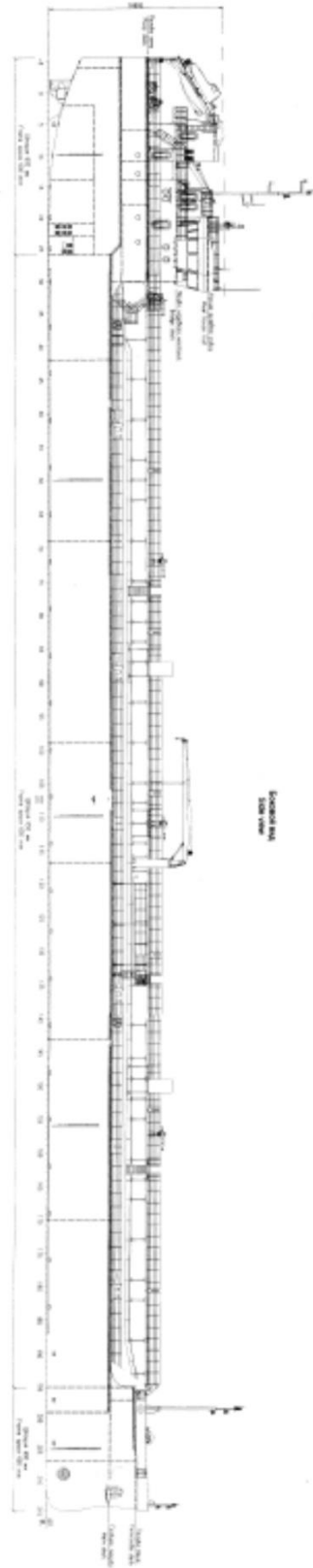
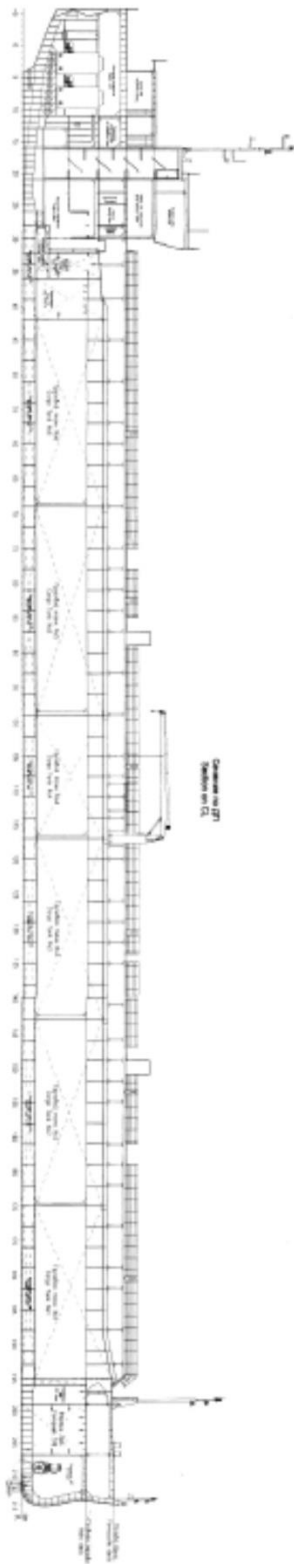
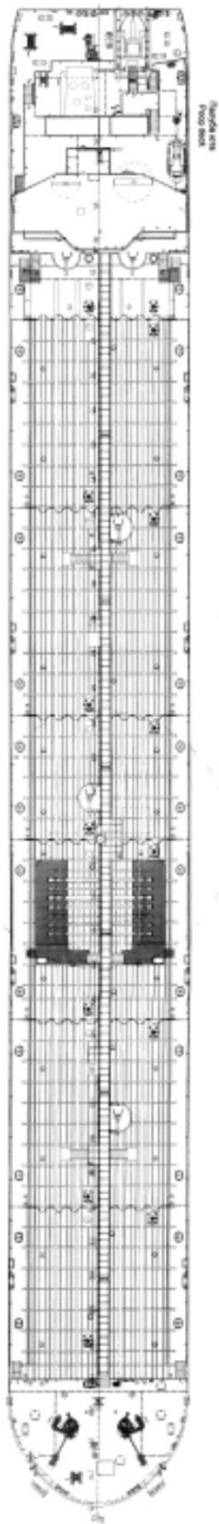
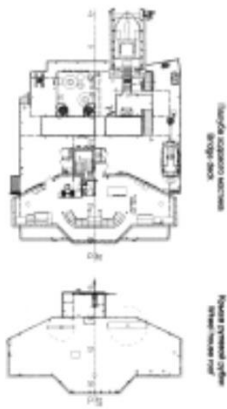
Ballast speed	<b>Max: 10.50 Knots (WSNP) Econ: 8 Knots (WSNP)</b>
Laden speed	<b>Max: 10 Knots (WSNP) Econ: 8 Knots (WSNP)</b>
What type of fuel is used for main propulsion/generating plant	<b>MGO/VLSFO 180-380CST 0.5%H<sub>2</sub>S MGO</b>
Type/Capacity of bunker tanks	<b>Fuel Oil: 313 Cu. Metres Gas Oil: 49 Cu. Metres</b>
Is vessel fitted with fixed or controllable pitch propeller(s)	<b>Fixed</b>
Main engine	<b>2 / 1,200 Kilowatt / Wartsila 6L20</b>
Aux engine	<b>3 / 296 Kilowatt / Volvo Penta D13MG</b>
Boilers	<b>2 / 2.50 Metric / Tonnes / Hour / AALBORG / Steam</b>

**BOW/STERN THRUSTER**

What is brake horse power of bow thruster (if fitted)	<b>Yes, 308 bhp</b>
What is brake horse power of stern thruster (if fitted):	<b>No</b>

**EMISSIONS**

Main engine IMO NOx emission standard	<b>Tier II</b>
Energy Efficiency Design Index (EEDI) rating number	<b>15,54grams-CO<sub>2</sub> / Tonne-Mile</b>



38 A, N.Aliyev street  
AZ1025 Baku, Azerbaijan  
T: +994 12 464 15 31 / 32  
E: info@caspmarine.com  
W: www.caspmarine.com