

# CMS-3

Harbour Anchor Handling  
Towing Vessel



## GENERAL DATA

Type	Tug
Year built / Place of build	2014/Hardinxveld -Giessendam, The Netherlands
Class	KM ⚓ R2 AUT1
Flag	Azerbaijan
Port of registry Call sign	Baku, 4JQH
IMO number	9684639

## DIMENSIONS

Length overall	26.85 m
Breadth	11.50 m
Molded Depth	3.50 m
Summer Draft	2.23 m
Freeboard at Summer	
Draft	1.27 m
Gross Tonnage	255 t
Net Tonnage	76 t
Deck Strength	10 t/m <sup>2</sup>
Deck Area	130 m <sup>2</sup>
Air draft	Maximum from base -17.85 m, Minimum from base -12.27 m (with mast folded)

## CAPACITIES

Fuel Oil	120.6 m <sup>3</sup>
Fresh Water	49 m <sup>3</sup>

## PROPULSION

Main Engines	3 x 634 Kw C 32 TTA Caterpillar
Bow Thruster	1 x 184 Kw tunnel thruster
Bollard pull	34.5 tons

## AUXILIARIES

Diesel Alternators	2 x 93,6 KW - C 4.4 Caterpillar
Hydraulic Power pack	1 x 338,5 KW - C18 TTA Caterpillar

## SPEED

Maximum/Normal	
Service/Economical	10.5 knot/8.5 knot/ 5 knot

## FUEL CONSUMPTION PER DAY

FO Consumption	
- Full Speed	11 tons per day 3 engines
FO Consumption	
- Normal Service	4,2 tons per day 2 engines
FO Consumption	
- Economical Speed	2,5 tons per day 2 engines

## NAVIGATION EQUIPMENT

Radars	1 x Furuno FAR 2117
Echo Sounder	1 x Furuno FE 700
Gyro Compass	1 x Anshuetz STD 22
Compass	1 x Cassens&Plant

**NAVIGATION EQUIPMENT**

Auto Pilot	1 x Radio Holland
Doppler Log	1 x Furuno DS-80
GPS	1 x Furuno GP-150
AIS	1 x Furuno FA - 150
Navtex	1 x Furuno NX - 700

**GMDSS EQUIPMENT**

MF Transceiver	1 x Furuno FS 25 FS 2575C
VHF	2 x Thrane & Thrane Sailor 6222
Inmarsat	2 x Thrane & Thrane Sailor 6006
SART	1 x Tron SART 20
EPIRB	1 x Tron 40 S MK II

**LIFESAVING APPLIANCES**

Life raft	2 x 8 person capacity
Lifejackets	12 pcs
Immersion Suits	12 pcs
MOB net	1 x Marcusnet

**FIFI EQUIPMENT**

Fixed system	Co2 fire suppression system
BA sets	2

**ACCOMMODATION**

Cabins:	2 x 1 person 3 x 2 person
Crew	8

**CRANE**

2 x Heila HLRM 230/4SLK  
One positioned port bow and one midships aft of the tow winch  
25 t at 7.46 m or 9.8 t at 16.46 m

**ANCHOR HANDLING/TOWING WINCH**

Ridderinkhof, AHW-H-1000  
double drum in waterfall execution

Capacity:  
40mm x 750m Towing 50 ton at 10 m/min pulling force (1st layer)

Towing 90 ton brake holding force (1st layer)

40mm x 700m Anchor 100 ton at 5 m/min pulling force (1st layer)

Anchor 150 ton break holding force (1st layer)

**QUICK RELEASE TOW HOOK**

Type DCX 18/25 on winch foundation with pneumatic release controlled on SB side main control desk in the front and one control on the rear control desk.

**TUGGER WINCH**

12 ton – 5-20 m/min  
5 ton - 30 m/min

**TOWING PINS "THREE IN A ROW"**

Type 35T-3R-OPEN-SPECIAL-400.  
Hub-400mm,  
SWL – 35 ton. Design Load 50

**ANCHOR HANDLING PINS/CHAIN-WIRE STOPPER "TRIANGULAR ARRANGEMENTS"**

Type 35T-2F-1CS-OPEN-400.  
Pins SWL -35 ton. Design Load -50 ton.  
Hub-400 mm  
Stopper SWL- 75 ton. Design Load-150 ton

**ANCHOR CAPSTAN**

1 x 270 kg Pool TW (HHP),  
chain 192, 5 m - 17, 5 mm + 1 anchor  
spare 5 ton at 30 m/min

**SPUDS**

Two holes 650 mm for spuds are provided, covered with bolted plates, one SB fore and one SB aft.

**BOW ROLLER FORE AND AFT DECK**

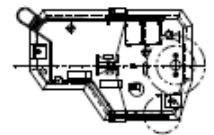
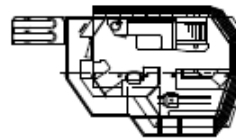
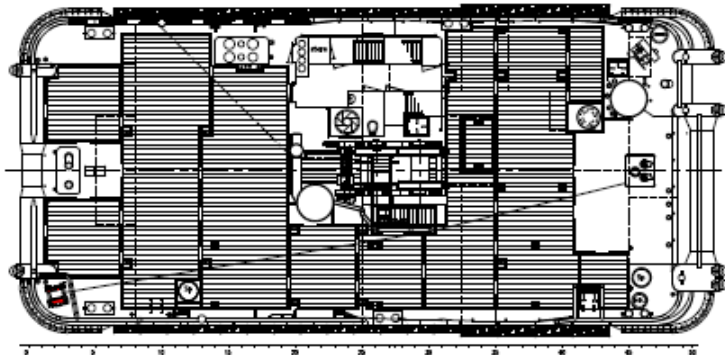
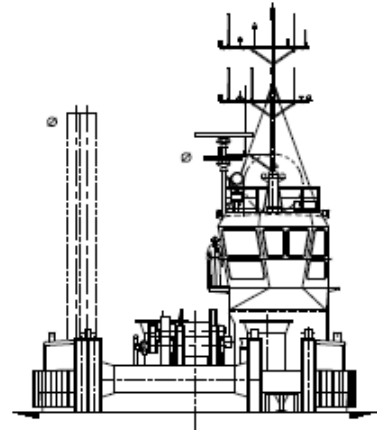
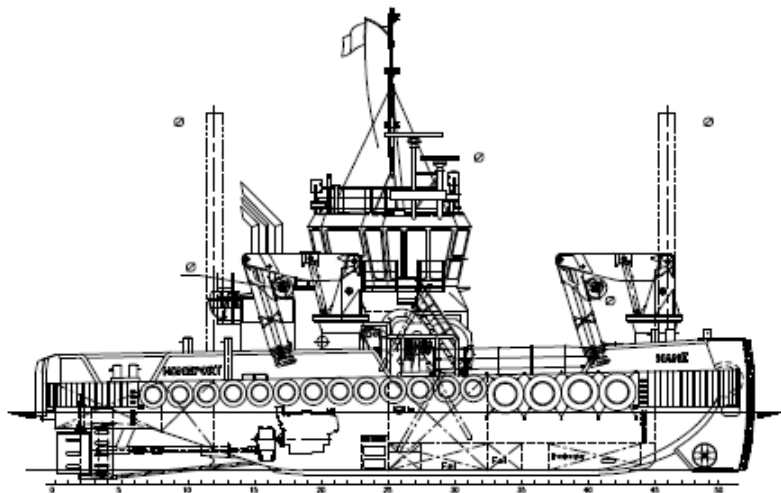
A heavy bow roller is fitted on the fore deck, diam. 1016 mm, length ca. 5460 mm. And one on the aft deck, dia.762 mm length 1970 mm, to assist in anchor handling and dredge hose operations.

**VESSEL SPECIFIC CHARACTERISTICS**

The CMS-3 is a versatile multicat, constructed in Europe in 2014 with three independently driven propellers in kort nozzles aft, each with its own rudder, and a single bow thruster forward on the stbd bow.

Two cranes of 25 T Capacity each, a deck strength of 10 T m<sup>2</sup> and 130 m<sup>2</sup> of deck space available for materials. Together with a tow winch of 90 Ton break capacity, a 150 ton capacity anchor handling winch, as well as a bollard pull of 34.5 T, make this a very useful vessel for a wide variety of port and coastal operations.

It should also be noted that the cranes can be upgraded for man riding should that be required.



MAIN PARTICULARS	
LENGTH o/a	26.00 m.
BEAM mid	11.50 m.
DEPTH 1/4L	3.50 m.
DRAFT max.	2.25 m. from base

Items marked with ⓪ are optional



38 A, N.Aliyev street  
 AZ1025 Baku, Azerbaijan  
 T: +994 12 4641531 / 32  
 E: info@caspmarine.com  
 W: www.caspmarine.com