

CASPIAN MARINE SERVICES LTD

Baku, Azerbaijan 38A, N.Aliyev street AZ1025
Tel.: (+99412) 4641531/32
Fax: (+94412) 4641533
E-mail: info@caspmarine.com



ISLAY

75 M/ 14790 BHP/ Anchor Handling Tug Supply Vessel



General data	
Type	Anchor Handling Tug Supply vessel
Year built / Place of build	2002/ Ferguson, Glasgow, UK
Class	(RMRS) 1A1 Tug Supply Vessel SF EO DK (+) HL (2.5)
Flag	Azerbaijan
Port of registry Call sign	Baku 4JME
IMO number	9246073
Bollard pull	172T (last certified 160.8T)

Dimensions	
Length overall	74.75 m
Breadth	16 m
Moulded Depth	7.6 m
Summer Draft	6.50 m
Freeboard at Summer Draft	1.118 m
Gross Tonnage	2544 t
Net Tonnage	832 t
Deadweight	2665 t
Deck Strength	5 t per m2
Deck Strength	10 t per m2 aft of frame 30

Capacities	
Fuel Oil	887 m3
Fresh Water	594 m3 (559 Cargo, 35 Domestic)
Drill Water	128.6 m3
Ballast	895 m3
Brine	382 m3
Mud	418 m3
Base oil	128 m3
Dry Bulk	4 x 60.6 m3
Deck Area	381 m2 / 28 m x 13 m

Propulsion	
Main Engines	2 Wartsila 12V 32, 2x 5520 kW
Bow Thruster	2 x 735 kw CPP tunnel
Stern thruster	1 x 735 kw CPP tunnel
Bollard Pull	160.8
Rudders	Twin Ulstein high lift rudders

Auxiliaries	
Alternators	2 x 315 kw
Diesel Alternator Emergency	1 x 125 kw

Speed	
Maximum/Economical	16.0/10.0 kts

Fuel Consumption per day	
Maximum/Economical	51/12 t

Navigation equipment	
Radars	2 x Fruno
Echo Sounder	1 x Furuno
Gyro Compass	2 x 2 x Navigat X MK1 / Navigat X MK2
Auto Pilot	1 x Robertson
Doppler Log	1 x JRC
GPS	2 x Furuno/Simrad
DP-0	1 x Joystick Simrad SJ01
AIS	Mcmurdo

Communication equipment	
MF Transceiver	1 x Sailor
GMDSS	Inmarsat C, Area 3
VHF	3 x Sailor

Lifesaving appliances	
Life rafts	4 x 25 man
Lifejackets	44 pcs
Immersion Suits	37 pcs
FRB	6 man

FiFi Equipment	
Fixed system	CO ₂
BA sets	x 5

Accommodation	
Cabins: Crew cabins	1 berth cabins -7
	2 berth cabins -7
	4 berth cabins -1
Berth (Total)	Max 25

Mooring, Towing & Anchor Handling Equipment	
Anchor winch	Brattvaag / Rolls-Royce BSL380W/2 SL380 W
Max Pull 1st Layer	550 t
Stall	380 t
Anchors	2 x 1845 kg Pool TW
Karm forks:	
Size	(diameter 65 - 125mm)
SWL	750 t
Karm forks inserts:	1pcs-135 mm
	2pcs-100 mm
	1 pcs-80 mm
	1 pcs – 70 mm
	3 pcs – 85 mm
Gypsies	1pcs-p.s -70mm
	1pcs-stbd.s – 76 mm
	1pcs spare- 76mm
	1 pcs spare - 84mm
Towing drum:	∅77mm/ ∅83mm
Port side	1880m/1610m
Starboard side	1880m/1610m
AH drum:	∅77mm/ ∅83mm
	5490 m / 4730 m
Storage Drums:	
Port Side Drum wire capacity	1435m- ∅ 77mm
Middle storage Drum wire capacity	1435m- ∅ 77mm
Starboard storage Drum wire capacity	1830m - ∅ 77mm
4 x Chain lockers with capacities:	∅ 84 mm – 570 m
	∅ 76mm - 750m
	∅ 70mm – 900m
2 x Tagger winches SWL -12t.	∅26mm – 100m
2 x Stern Capstans SWL-10t	∅ 22mm-50m

Towing Pins:	
SWL	240 t

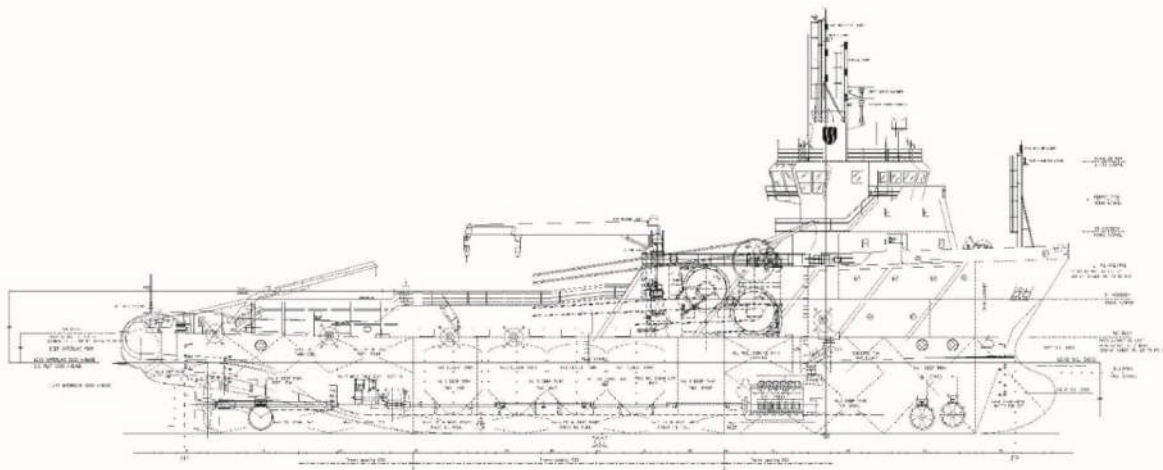
Stern Roller	
Size	5m /3m
SWL	500t

Deck crane:	
Forward CRANE	
Manufacturer	1 x TTS-Norlift AS
SWL and radius	5 t x 12 m / 1.5 t x 15.5 m

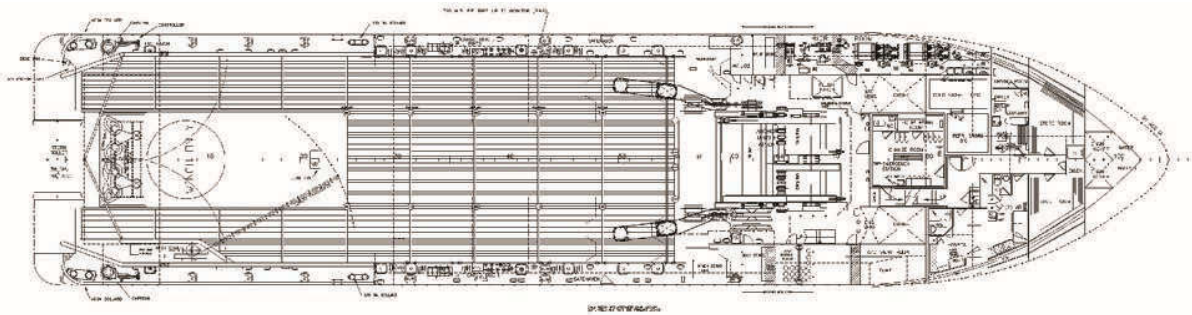
AFT CRANE:	
Manufacturer	Palfinger marine folding
SWL and radius	3 t x 10 m

Vessel Specific Characteristics

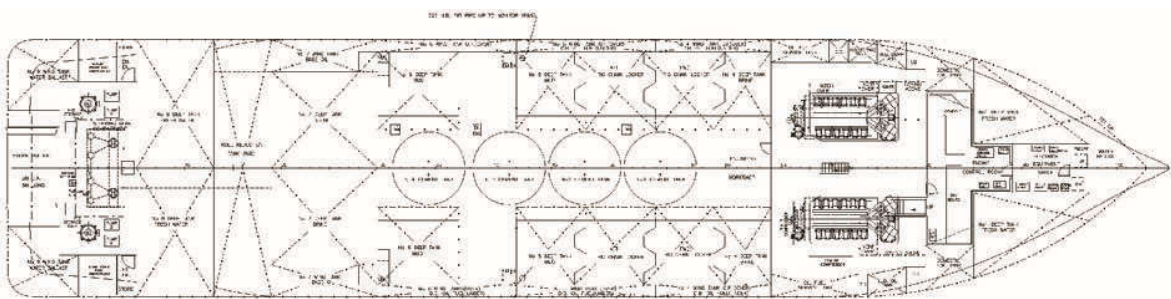
Islay is a 2002 built DPS offshore anchor-handling tug supply vessel, with 172T bollard pull and space for over 5000 meters of 77 mm wire on the main drum, she is one of the largest AHTS's operating in the Caspian region. Specifically built for offshore operations, Islay can tow, transport containerized cargo, bulk materials (mud, cement, brine, etc.), act as an ROV platform or lay and/or recover anchors. Due to the large deck area, the vessel can launch or recover anchors whilst at the same time having other anchor line materials on board, such as bouys, chain inserts or additional anchors.



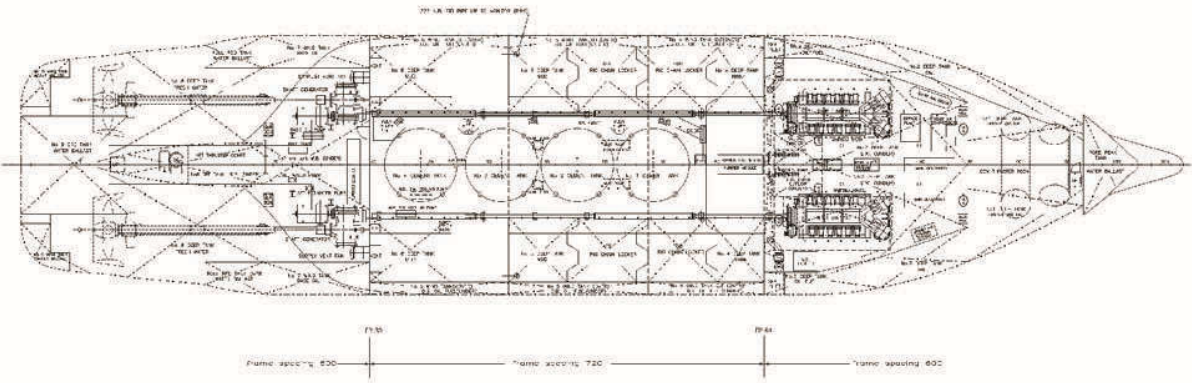
Profile



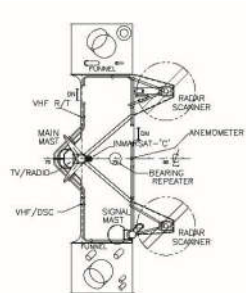
1st Deck



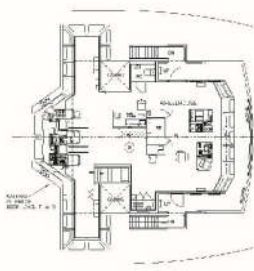
2nd Deck



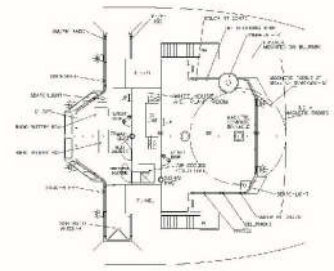
Tank top



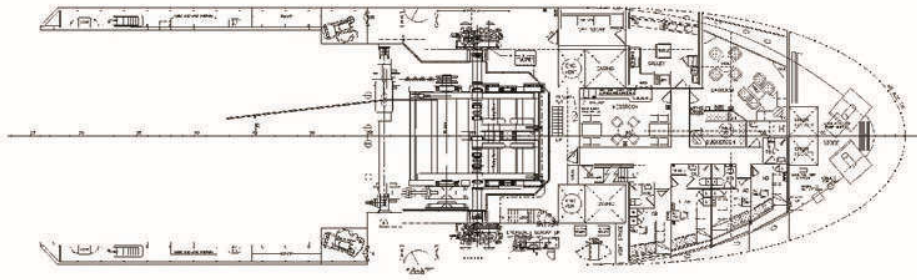
Mast Platform



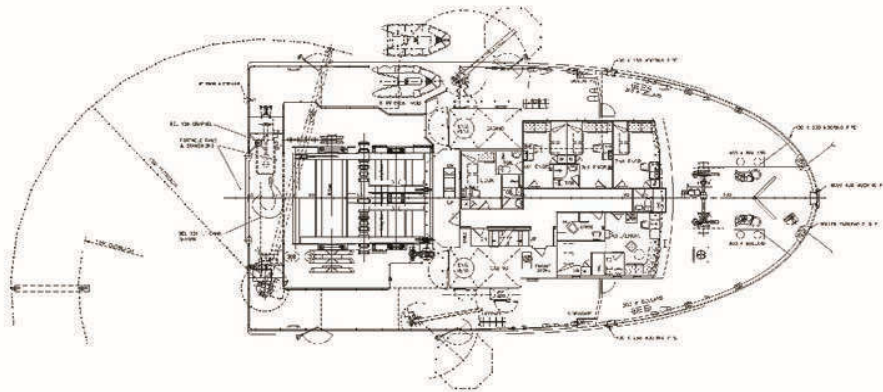
Bridge deck



Top wheelhouse



01 Accomodation deck



02 Accomodation deck

