

# GURBAN ABASOV

600 t Crane Vessel/ Flotel  
Available deck space 3235 m<sup>2</sup>  
Max POB with Living module-217  
(crew included)



## GENERAL DATA

Type	Crane Vessel / Flotel
Year built / builder	1986, Turku, Finland
Class	(RMRS) KM Ⓢ L2 1 AUT2 DYNPOS-3 special purposes crane ship-catamaran
Flag	Azerbaijan
Port of registry	Baku
Call sign	4JCI
IMO number	8410172
MMSI No:	MMSI 423341100

## DIMENSIONS

Length overall	141.40 m
Breadth	62.80 m
Moulded Depth	13.00 m
Summer Draft	5.20 m
Freeboard at	3.808 m
Gross Tonnage	21.497 t
Net Tonnage	6449 t
Deadweight	6277 t
Displacement	13993 t
Deck Strength	5 t/m <sup>2</sup> (cargo area strength 10 t/m <sup>2</sup> ) 3770 m <sup>2</sup> (without living modules on deck)

## CAPACITIES

Fuel Oil	851 m <sup>3</sup>
Fresh Water	876 m <sup>3</sup>

## PROPULSION

Main Engines	3 x 1.850 kW 6 R 32 Wartsila Vaasa
Containerized diesel hydraulic power units	4 x 1268 kW Cummins QSK50M1
Azimuth Propellers	2 x 1.700 kW AQUAMASTER
Bow Thruster	2 x 400 kW Kamewa
Retractable	4 x 1100 kW THRUSTMASTER
Azimuthal Thrusters	OD1500N

## AUXILIARIES

Diesel generator	3 x 430 kW 380v x 50 Hz Mitsubishi
Emergency Diesel generator	1 x 116 kW 380v x 50 Hz Deutz

## SPEED

Maximum / Economical	10.0/8.0 kts
-------------------------	--------------

## FUEL CONSUMPTION PER DAY

Maximum / Economical	12/8 tons per day
-------------------------	-------------------

**NAVIGATION EQUIPMENT**

Radars	2 x Furuno
Echo Sounder	1 x Furuno FE700
Gyro Compass	1 x Standart-22
Auto Pilot	1 x NAVIS AP-3000
Doppler Log	1 x Furuno DS80
GPS	2 x Furuno GP-150
ECDIS	1 x Transas

**DYNAMIC POSITIONING SYSTEM (DP3 CLASS)**

DP System	Kongsberg – K-Pos 21+11, w/cJoy
PRS	2 x DGPS 1 x HIPAP 352P MGC (Kongsberg) - 1 1 x Taut-wire MK16 V1.0 1 x SpotTrack (Laser based) 1 x Radius(Microwave)
Gyrocompass	3 x Sperry Marine Navigat 100
MRU	2 x MRU 2 1 x MRU 5
Wind sensor	3 x Ultrasonic Wind sensor

**COMMUNICATION EQUIPMENT**

MF Transceiver	1 x Furuno
Satcom	V-Sat
GMDSS	Inmarsat C, Area 1, 2, 3
VHF	2 x Furuno

**LIFESAVING APPLIANCES**

Life Boats	2 x 65 man
MES	2 x 101 persons Viking
Life- raft	2 x 101 persons Viking 2 x 51 persons Viking
Lifejackets	289
Immersion Suits	289
FRB	15 man

**FIFI EQUIPMENT**

Fixed system	CO <sub>2</sub>
BA sets	x 6

**ACCOMMODATION**

Cabins:	
Crew cabins:	
Single	16
Double	37
Passenger cabins:	
VIP (single)	4
Double	68
Hospital	1
Gymnasium	1
Sauna	2

**Mess Rooms:**

Crew	28
Passengers	68
Client Offices	1 for 15 people
Recreation	
Rooms	3
Seats (total of all 3 recreation rooms)	85

**MOORING EQUIPMENT**

Anchor winch	8 x C-Nautical Electric Driven Anchor Wire Mooring Winch 900KN pull on First Layer. Each Winch - 2000 m x 3" Wire
Capstan	RAUMA REPOLACI 120E
Anchor	8 x 12t MK6 Stevpris Anchor
Tugger Wires:	Steel wire rope sling 6x36 IWRC Diameter 52 x 60 m
SWL	34.70 t
Buoy Lasso:	PDR 4000
Weight	890 kg

**CRANE**

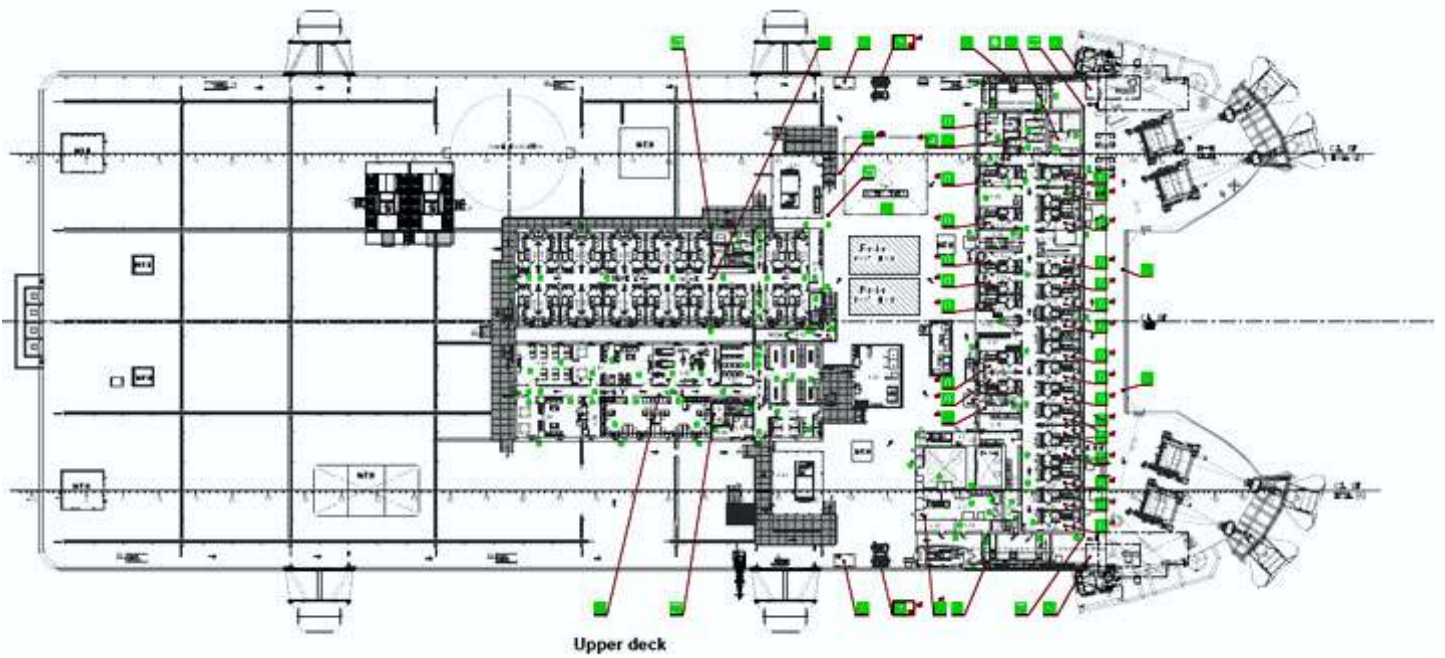
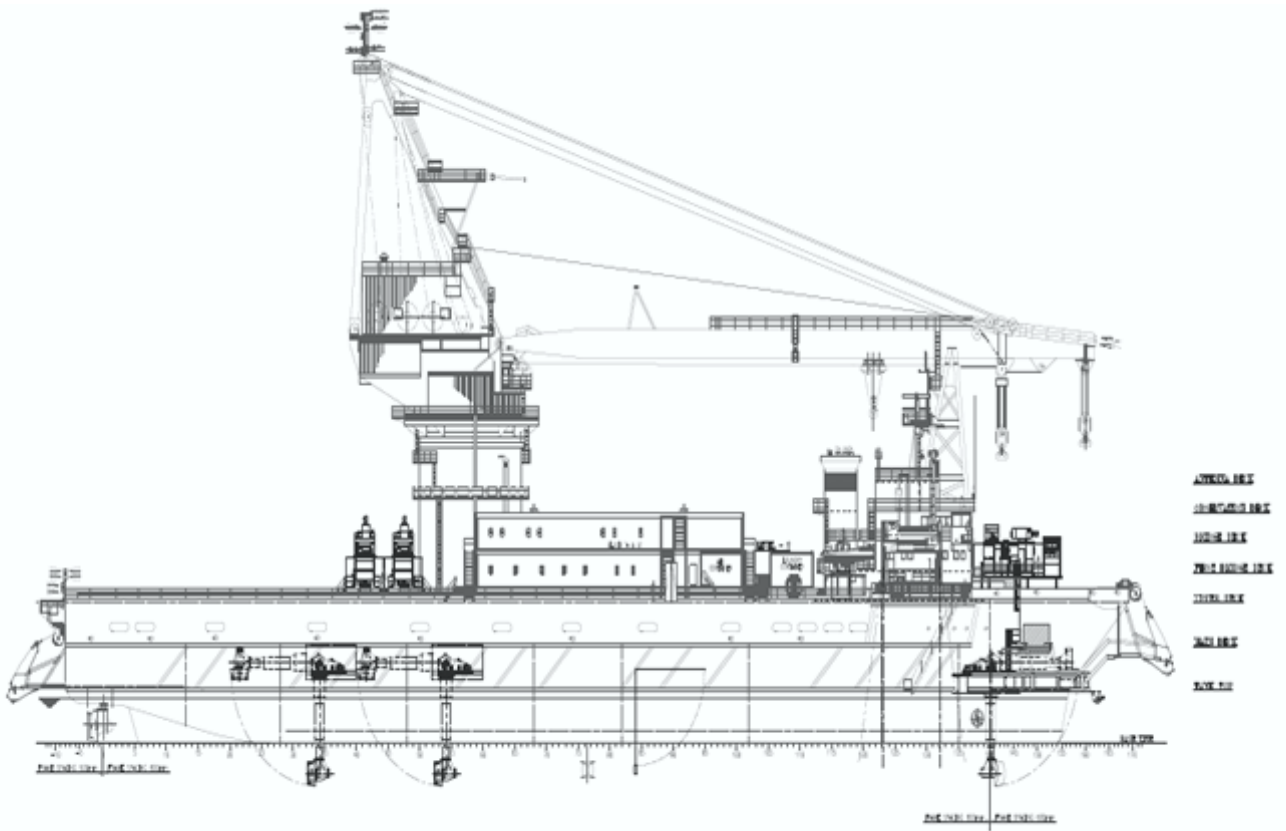
600 t - KONE	
Finland	
Blocks	
Main	2 x 300 t @ 39 m
Aux	1 x 150 t @ 69 m
Trolley Hoist	1 x 20 t @ 67 m

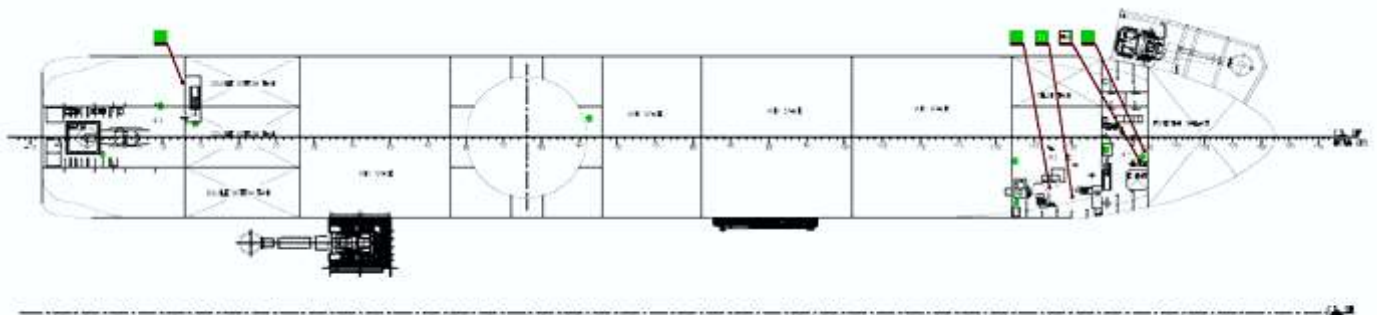
**STABILITY EQUIPMENT**

Pumps	2 Ballast pumps
Capacity	250 m <sup>3</sup>

**VESSEL SPECIFIC CHARACTERISTICS**

Gurban Abasov is a purpose built 600 T crane vessel with eight point mooring system, and over 3,000 m<sup>2</sup> of useable deck space available for project works. In 2014 the vessel was modified and upgraded with the addition of purpose built guest accommodation, allowing project works to be carried out whilst passengers remain onboard. Industry leading Mass Evacuation Systems (MES) for full vessel complement are provided. In 2019 the vessel was modified and upgraded for Dynamic Positioning station keeping ability. Present DP Class – DP3.





Below main deck



38 A, N.Aliyev street  
AZ1025 Baku, Azerbaijan  
T: +994 12 4641531 / 32  
E: info@caspmarine.com  
W: www.caspmarine.com

