

CASPIAN MARINE SERVICES LTD

Baku, Azerbaijan 38A, N.Aliyev street AZ1025
Tel.: (+99412) 4641531/32
Fax: (+94412) 4641533
E-mail: info@caspmarine.com



CMS SEMA

81m/ General Cargo Vessel/
2878, 5 m3 hold space (available as single or divided)



General data

Type	General Cargo
Year built / builder	1993 Germany
Class	(RMRS) KM ★ L4 1 R1 AUT3
Flag	Azerbaijan
Port of registry	Baku
Call sign	4JQN
IMO number	9066057

Dimensions

Length overall	81.34 m
Breadth	11.30 m
Moulded Depth	5.40 m
Summer Draft	4.233 m
Freeboard at Summer Draft	1.193 m
Gross Tonnage	1596 t
Net Tonnage	831 t
Deadweight	2300 t

Capacities

Fuel Oil	110 m ³
Fresh Water	25,7 m ³
Hold Capacity	2925 m ³ (51.6 m x 9.0 m x 6.3 m)
Hold inner bottom	12. t/m ²
First deck load capacity	1.25 t/m ²
Weather deck surface	1.0 t/m ²
Hatch load capacity	1.52 t/m ²

Propulsion

Main Engines	1 x 1000 Kw 6M 332 C
Bow Thruster	1 x 130 Kw BU 20 F

Auxiliaries

Diesel Alternators	2 x 161 Kw 380 v 50 Hz CAT
Diesel Alternator Emergency	1 x 60 Kw 380v x 50 Hz CAT

Speed

Maximum/Economical	10.5 / 7.8 kts
--------------------	----------------

Fuel Consumption per day

Maximum/Economical	3305 / 2500 liters.
--------------------	---------------------

Navigation equipment

Radars	Furuno Electric FR-2115 & FR-7062
Echo Sounder	1 x Furuno FE 700
Gyro Compass	1 x Standart 14
Auto Pilot	1 x Nauto Pilot D
GPS	1x Furuno GP-80

Communication equipment

MF Transceiver	1 x Thrane & Thrane
GMDSS	Inmarsat C Sperry,
VHF	2 x Thrane & Thrane

Lifesaving appliances

Lifejackets	20
Immersion Suits	19
Life raft	3 x 10 pers
Rescue Boat	6 man

FiFi Equipment

Fixed system	CO ₂
BA sets	3

Accommodation

Crew cabins	5 x 1 person
	3 x 2 persons
Berth (Total)	11
Crew	11 persons

Mooring equipment

Anchor winch	Bow: KDKF 160 L; stern: KDKF 132 M
Anchors	Folding Stockless Anchor D HONE SPEZIAL - Sea Performance – STS

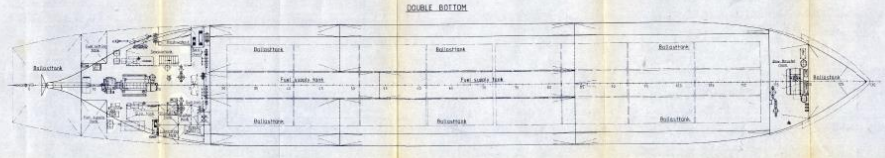
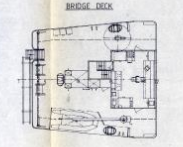
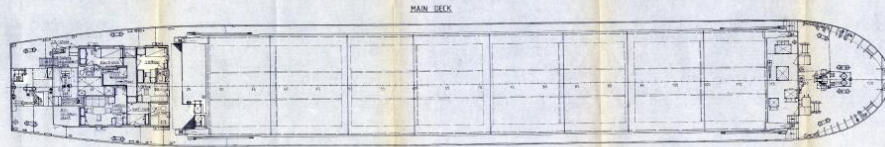
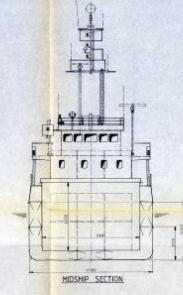
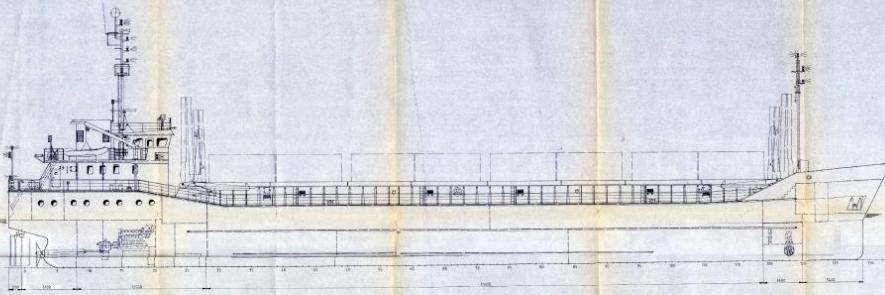
Stability Equipment:

Pumps	2 x Ballast pump
Capacity	2 x 130 m ³ /h

Vessel Specific Characteristics

CMS Sema is a general cargo vessel constructed in Germany. The main hold is box shaped with vertical sides, with a capacity of 2925 m³, and can be sub divided by utilizing 2 x moveable bulkheads. CMS Sema can take heavy loads up to 12 t/m² on hold inner bottom, and 1.52 t/m² on the hatch covers.

The hatch covers are Hydraulic pulled stowing forward and aft



WATER CASTER

CLASS. PLAN A 1.1
 HEAD OF TRAIL Leading Truss

MAIN DIMENSIONS

LENGTH OVER ALL	102.400 M
LENGTH BETWEEN PERPS	88.700 M
BREADTH MOULDED	27.400 M
BREADTH AT DECK	28.000 M
DEPTH TO MAINDECK	5.400 M
DEPTH TO UPPER DECK	10.000 M
DEPTH TO LOWER DECK	14.700 M
DEPTH TO LOWER HOLD	20.000 M
DEPTH TO LOWER HOLD	25.000 M
DEPTH TO LOWER HOLD	30.000 M
DEPTH TO LOWER HOLD	35.000 M
DEPTH TO LOWER HOLD	40.000 M
DEPTH TO LOWER HOLD	45.000 M
DEPTH TO LOWER HOLD	50.000 M
DEPTH TO LOWER HOLD	55.000 M
DEPTH TO LOWER HOLD	60.000 M
DEPTH TO LOWER HOLD	65.000 M
DEPTH TO LOWER HOLD	70.000 M
DEPTH TO LOWER HOLD	75.000 M
DEPTH TO LOWER HOLD	80.000 M
DEPTH TO LOWER HOLD	85.000 M
DEPTH TO LOWER HOLD	90.000 M
DEPTH TO LOWER HOLD	95.000 M
DEPTH TO LOWER HOLD	100.000 M

CLASS	PLAN A 1.1
DATE	1959
BY	10544
NO.	10519
GENERAL ARRANGEMENT PLAN	10519-0121