

GARA GARAYEV

DP2 Fast Catamaran / 120 Passenger capacity / 40 knots max speed



GENERAL DATA

Flag & Port of registry:	Azerbaijan / Baku
Built:	Austal, Philippines, November 2016
Call Sign:	4JTI
Classification:	ABS A1, HSC Crewboat, Coastal Service Less than 100 nm Coastwise Service, AMS, DPS-2
IMO No:	9782065

DIMENSIONS

Length, overall:	57.60 metres
Length, BP:	53.90 metres
Breadth, moulded:	12.50 metres
Depth, main deck:	4.50 metres
Design draft:	2.17 metres
Maximum draft midship:	2.50 metres
Gross Tonnage:	816
Net Tonnage:	245
Length between P.P.:	57.6 metres
Breadth:	12.5 metres
Draft minimum:	1.7 metres
Draft maximum:	2.5 metres (with Thrusters lowered)

CAPACITIES

Deadweight (maximum):	160 tonnes
Clear Deck Area:	230 m ²
Deck Strength:	5 t/m ²
Deck Cargo:	100 tonnes 30 x lashing points for securing of 10ft and 20ft containers

Ship Fuel:	100 m ³ total at 100% capacity
Potable Water:	20 m ³ total
Potable water production:	10 m ³ per day

MACHINERY

Main Engines:	4 x MTU 16V4000 M73L, 2880 kW each = 11520 kW (15442 BHP)
Propulsion:	4 x Hamilton HT810 waterjets
Azimuth Thruster:	2 x ZF 150 kW (2 x 201 BHP) Retractable Azimuth Thrusters
Auxiliary Generators:	2 x Caterpillar C18, 350kW each 50Hz

DECK MACHINERY

Capstans:	2 x forward and 2 x aft mounted reversible hydraulic capstans
Windlass:	1 x Muir SD450 anchor windlass and 1 x 439 kg anchor
Bow Mooring:	2 x 7 tonnes bollards
Smit Towing Bracket:	Towing bollard 18.5 tonnes
Crane Capacity:	1 x 880kg at 5m Palfinger stores crane

ELECTRONICS

Main Radar:	1 x X Band Radar - Furuno FAR-2117
Auxiliary Radar:	1 x S Band Radar - Furuno FAR-2137S
Auto Pilot:	1 x Navitron NT888
Gyro Compass:	3 x Tokyo Keiki TG-8500
Magnetic Compass:	1 x Cassens & Plath Type 11
Echo Sounder:	1 x Furuno FE-800
GPS :	2 x Furuno GP-170
Anemometer:	3 x Gill Ultrasonic Wind Sensors
Speed Log:	1 x Furuno DS-80
Communications:	1 x Furuno FS-1575 MF/HF/DSC Radio System
Watch System:	1 x Furuno BR-500
ECDIS:	2 x Furuno ECDIS FMD -3200
Navtex Receiver:	1 x Navtex NX-700A
Weather Fax:	1 x Furuno FAX-408
Satellite Communication:	FBB: Sailor 500 VSAT: Sailor 900
AIS:	1 x Furuno FA-170
Satellite Navigation:	1 x Furuno GP-170
Voyage Data Recorder	1 x Furuno VR 7000
VHF:	2 x Furuno FM-8900
Electronic Chart Display:	2 x Furuno FMD-3200BB Dual ECDIS
VRU:	3 x VRU's
BNWAS:	1 x Furuno BR-500

PERFORMANCE

Speed / Fuel Consumption:	Approximately 3.0 m ³ /hr at 100% MCR
	Minimum 604 nautical miles at 90% MCR on main tanks
	Minimum 2000 nautical miles at 20 knots
Full Speed:	40 knots at 90% MCR, 1,7 m draft
Economical Speed:	17 knots at 52% MCR, 1,9 m draft
In Port:	Generator 40 liters per hour

DYNAMIC POSITIONING

Type:	Rolls Royce Marine Icon System – DYNPOS AUTR
Reference Systems:	2 x MDL Fanbeam laser systems
Control Modes:	2 x Veripos LID5 DGPS systems
Joystick:	JSAH, JSMH, DP, Matrix Mode

STANDBY RESCUE EQUIPMENT

Rescue zone on main deck port and stbd side fitted with Jason's cradle
Standby Rescue: 150 persons

1 x Maritime Partner Weedo 600RB, 15 persons.
SOLAS approved FRB with inboard diesel waterjet.

ANTI-POLLUTION

Dispersant Tank:	5.0 m ³ (2 x 2.5 m ³ tanks)
Spray Booms:	Internal pipework installed for future installation of dispersant pump and dedicated booms

ACCOMMODATION

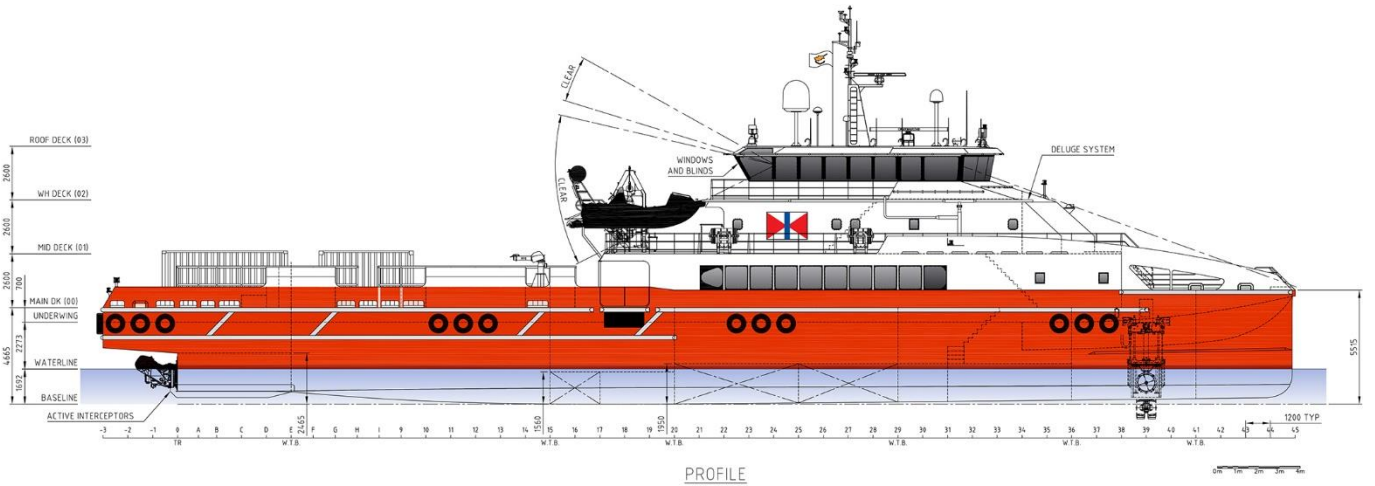
Berths	5 x 1 man cabins with ensuite bathroom
	6 x 2 man cabins with ensuite bathroom
	17 berths total
	1 x Messroom/TV lounge for crew
	Passenger Area: 120 x passengers seated 4 x TV entertainment system

MISCELLANEOUS

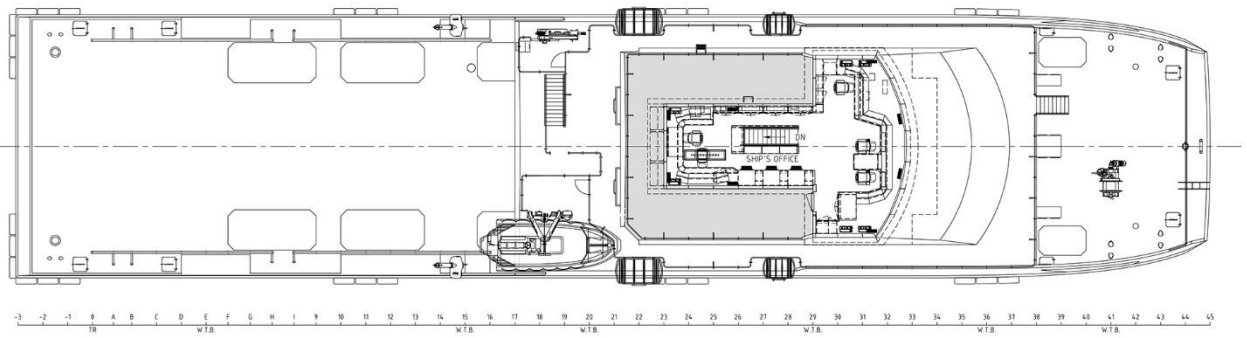
- 1 x Treatment Room for stretcher laydown in event of medevac.
- Ride Control System utilising active interceptors for better ride quality.
- Night Navigator HSC night vision system.
- CCTV system throughout internal spaces.
- 1 x HPR tube built into the hull for installation of acoustic reference system.
- 4 x Marine Evacuation Systems.
- Main deck sized and prepared for installation of client supplied heave compensated walk to work gangway system.
- Fixed H2S Gas Detection System.
- 2 x Reverse Osmosis Water Makers - 5 m³/day each.
- The vessel is fitted with four (4) closed reversible life rafts, two (2) of 100 person capacity, and two (2) of 50 person capacity.

VESSEL SPECIFIC CHARACTERISTICS

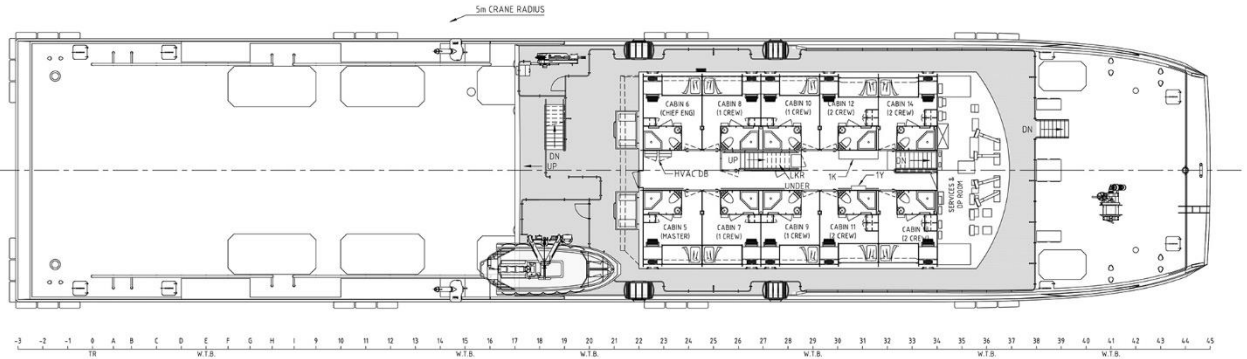
The K Class is a high-speed crew catamaran which provides a safe and cost-efficient transport alternative for the offshore energy industry. Equipped with state-of-the-art equipment for enhanced navigational capabilities, the catamaran is fitted with a DP2 DYNPOS AUTR system for accurate station-keeping during passenger transfers offshore. The catamaran is FiFi1 capable and is powered by a water jet propulsion system with a four-engine configuration generating 11,520 kW (15,442 BHP), allowing a speed of up to 40 knots. Manned to operate 24/7, she can safely transport up to 120 passengers and carry deck cargo up to a maximum weight of 100 t.



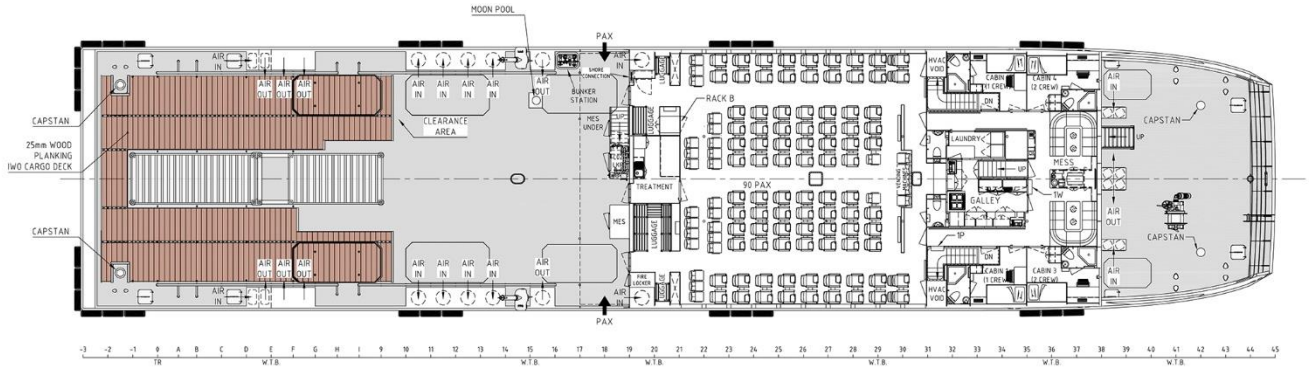
PROFILE



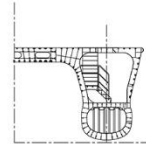
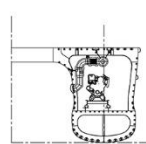
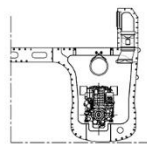
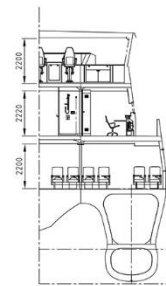
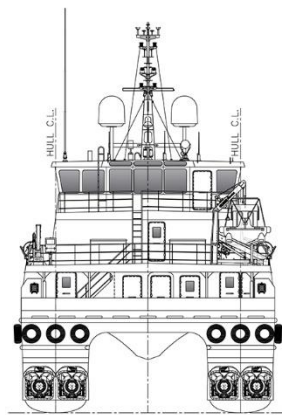
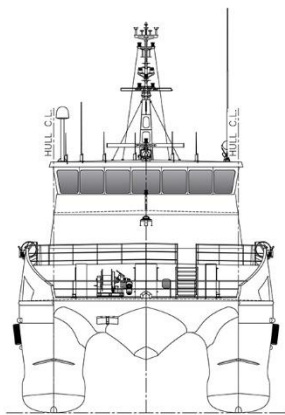
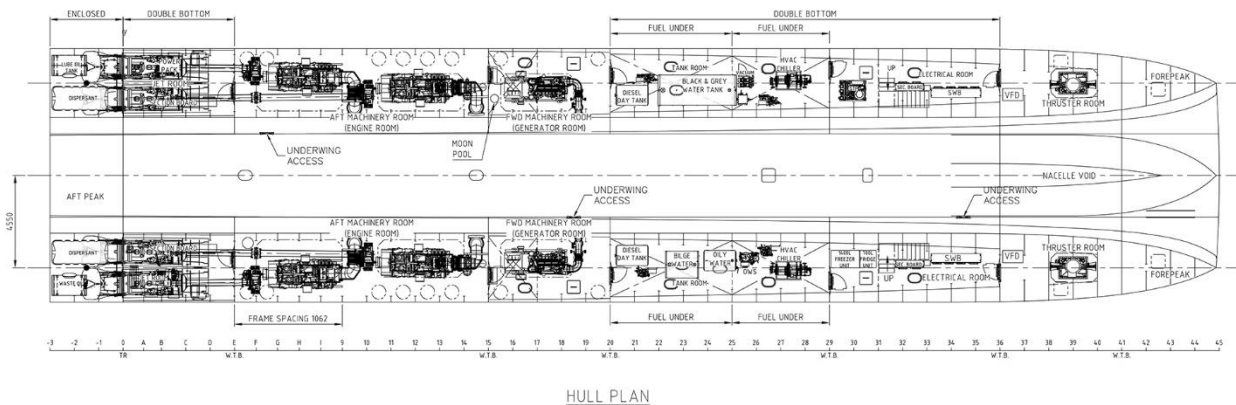
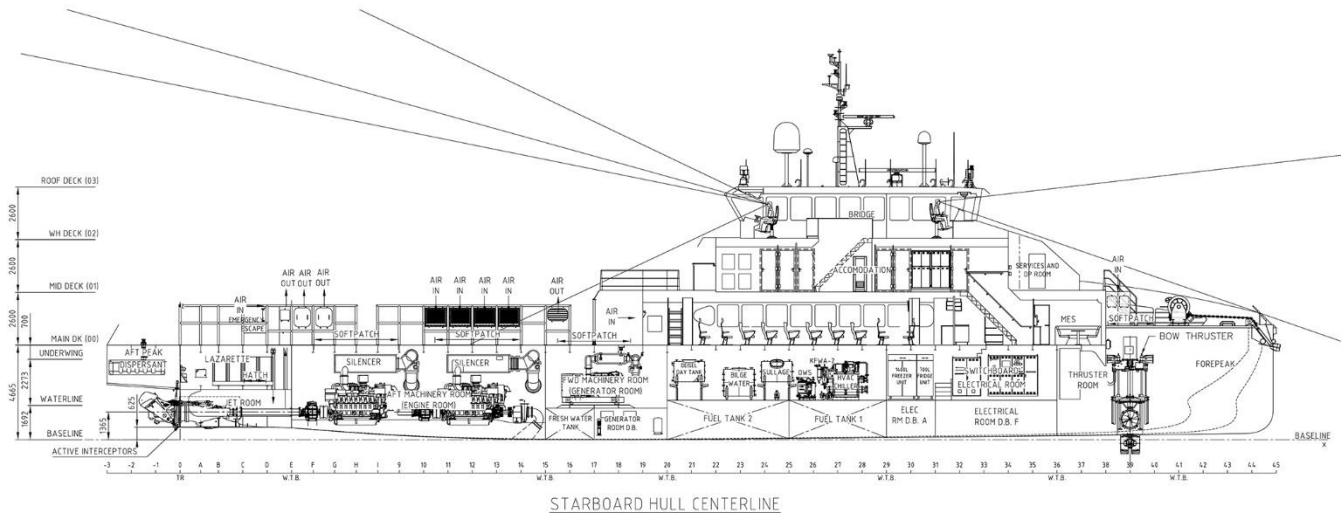
WHEELHOUSE DECK



MID DECK



MAIN DECK



38 A, N.Aliyev street
 AZ1025 Baku, Azerbaijan
 T: +994 12 464 15 31 / 32
 E: info@caspmarine.com
 W: www.caspmarine.com

