

# ISLAY

172T BP /14790 BHP/ Anchor  
Handling Tug Supply Vessel



## GENERAL DATA

|                             |  |
|-----------------------------|--|
| Type                        | <b>Anchor Handling Tug Supply vessel</b>                 |
| Year built / Place of build | <b>2002/ Ferguson Glasgow UK</b>                         |
| Class                       | <b>(DNV) ✕ 1A1 Supply Vessel Tug DK(+) E0 HL(2.5) SF</b> |
| Flag                        | <b>Azerbaijan</b>  |
| Port of registry            | <b>Baku</b>  |
| Call Sign                   | <b>4JME</b>  |
| IMO number                  | <b>9246073</b>   |
| Bollard Pull                | <b>172T (last certified 160.8T)</b>                      |
| Displacement                | <b>5275 t</b>  |

## DIMENSIONS

|                                     |   |
|-------------------------------------|---|
| Length overall                      | <b>74.75 m</b>  |
| Breadth                             | <b>16 m</b>   |
| Moulded Depth                       | <b>7.6 m</b>  |
| Maximum (Summer) Draft              | <b>6.50 m</b>   |
| Minimum even keel operational draft | <b>0.50 m</b>   |
| Freeboard at Summer                 | <b>1.118 m</b>  |
| Displacement                        | <b>5275 t</b>   |
| Gross Tonnage                       | <b>2544 R/T</b>   |
| Net Tonnage                         | <b>832</b>  |
| Deck loading                        | <b>5 t per m<sup>2</sup> (600 T pipe casing)</b>        |
| Deadweight                          | <b>2665</b>   |
| Deck Strength                       | <b>5/10 t per m<sup>2</sup> aft of frame 0-30/30-64</b> |

## CAPACITIES

|          |                          |
|----------|--------------------------|
| Fuel Oil | <b>887 m<sup>3</sup></b> |
|----------|--------------------------|

|   |  |
|---|--|
| Pump capacity                                   | <b>150 m3/h 90 m/head 9 bar</b>  |
| Fresh Water Pump capacity                       | <b>594 m<sup>3</sup> (559 Cargo, 35 Domestic)</b>                              |
| Drill Water Pump capacity                       | <b>100m3/h 90 m/head 9 bar</b>   |
| Drill Water Pump capacity                       | <b>128.6 m<sup>3</sup></b>   |
| Ballast water Pump capacity                     | <b>65 m3/h 90 m/head 9 bar</b>   |
| Ballast water Pump capacity                     | <b>447 t</b>   |
| Sewage Pump capacity                            | <b>150 m3/h. 9 bar</b>   |
| Brine Pump capacity                             | <b>35 t</b>  |
| Brine Pump capacity                             | <b>382.18 m<sup>3</sup></b>  |
| Mud Pump capacity                               | <b>100 m3/h. 90m/head. 23 bar</b>  |
| Mud Pump capacity                               | <b>418.14 m<sup>3</sup></b>  |
| Base oil Pump capacity                          | <b>100 m3/h. 90 m/head. 23 bar</b>   |
| Base oil Pump capacity                          | <b>128.38 m<sup>3</sup></b>  |
| Dry Bulk Cement/Barit Tanks Compressor capacity | <b>100 m3/h. 90 m/head. 9 bar</b>  |
| Dry Bulk Cement/Barit Tanks Compressor capacity | <b>4 x 60.6 m<sup>3</sup></b>  |
| Deck Area                                       | <b>Test press. 9.1 bar. Design Press. 5.8 bar. Operation press. 5.6 bar</b>    |
| Endurance                                       | <b>381 m<sup>2</sup> / 28 m x 13 m</b>   |
| Endurance                                       | <b>16 days (however, STP is operational, and endurance could be increased)</b> |

## PROPULSION

|                |  |
|----------------|--|
| Main Engines   | <b>2 x Wartsila 12V 32, 2x 5520kW</b>  |
| Bow Thruster   | <b>2 x 735 kw. Electric.CPP tunnel</b> |
| Stern thruster | <b>1 x 735 kw Electric. CPP tunnel</b> |
| Bollard Pull   | <b>160.8</b>                           |
| Rudders        | <b>Twin ULSTEIN high lift rudders</b>  |

## AUXILIARIES

|                    |                                      |
|--------------------|--------------------------------------|
| Diesel Alternators | <b>2 x 315 kw. Caterpillar C3406</b> |
|--------------------|--------------------------------------|

|                                |                                  |
|--------------------------------|----------------------------------|
| Diesel Alternator<br>Emergency | <b>1 x 125 kw. Cummins 6CTD8</b> |
|--------------------------------|----------------------------------|

### SPEED

|                      |                      |
|----------------------|----------------------|
| Maximum / Economical | <b>16.0/10.0 kts</b> |
|----------------------|----------------------|

### FUEL CONSUMPTION PER DAY

|                      |                          |
|----------------------|--------------------------|
| Maximum / Economical | <b>12/8 tons per day</b> |
| AH operation         | <b>18 ton</b>            |
| Towing 75%/150t Pull | <b>22 ton</b>            |
| Harbor Mode          | <b>1 ton</b>             |

### NAVIGATION EQUIPMENT

|              |  |
|--------------|--|
| Radars       | <b>1 x Furuno MU-190 / 1x Furuno FR 2115</b> |
| Echo Sounder | <b>1 x Jme F3000</b>                         |
| Gyro Compass | <b>2 x Navigat X MK1 / Navigat X MK2</b>     |
| Auto Pilot   | <b>1 x Robertson AP9 MK3</b>                 |
| Doppler Log  | <b>1 x JRC</b>                               |
| GPS          | <b>3 x Furuno GP-31 / GP-151</b>             |

### DP EQUIPMENT

|      |                                 |
|------|---------------------------------|
| DP-0 | <b>1 x Joystick Simrad SJ01</b> |
| AIS  | <b>Furuno FA-170</b>            |

### GMDSS EQUIPMENT

|                |  |
|----------------|--|
| MF Transceiver | <b>1 x FURUNO FS-2575C</b>                         |
| Inmarsat-C     | <b>FURUNO /Area A1+A2+A3</b>                       |
| VHF            | <b>2 x FURUNO FM 8900S,<br/>2x SAILOR RT2047/D</b> |

### LIFESAVING APPLIANCES

|                 |                      |
|-----------------|----------------------|
| Life rafts      | <b>4 x 25 man</b>    |
| Lifejackets     | <b>44 pcs</b>        |
| Immersion Suits | <b>37 pcs</b>        |
| FRB             | <b>6 pers / 60HP</b> |

### FIFI EQUIPMENT

|              |                       |
|--------------|-----------------------|
| Fixed system | <b>CO<sub>2</sub></b> |
| BA sets      | <b>x 5</b>            |

### ACCOMMODATION

|                     |                            |
|---------------------|----------------------------|
| Cabins: Crew Cabins | <b>1 Berth cabins – 4</b>  |
| Berth (Total)       | <b>2 Berth cabins – 10</b> |
| Crew as per Safe    | <b>4 Berth cabins -1</b>   |
| Manning Certificate | <b>Max – 28</b>            |
| Crew                | <b>10</b>                  |
| Operation           | <b>16+2</b>                |

### MOORING & AH EQUIPMENT

|                    |  |
|--------------------|--|
| Anchor winch       | <b>Brattvaag / Rolls-Royce<br/>BSL380W/2 SL380 W</b> |
| Max Pull 1st Layer | <b>550 t</b>   |
| Stall              | <b>380 t</b>   |
| Anchors            | <b>2 x 1845 kg Pool TW</b>                           |

|  |  |
|--|--|
| Karm Forks:<br>Size                          | <b>Ø450 mm<br/>Ø65 - 125 mm</b>  |
| SWL  | <b>750 t</b>   |
| Karm forks inserts:                          | <b>Insert 52mm-1 pcs<br/>Insert 70mm-2 pcs<br/>Insert 82 mm-2 pcs<br/>Insert 88 mm-2 pcs<br/>Insert 110 mm-1 pcs</b> |
| Gypsies:                                     | <b>1 pcs - p.s - 76 + mm wire rope<br/>1 pcs - stbd.s - 70 mm wire rope<br/>1 pcs spare - 76mm wire rope</b>         |
| Towing drum port side                        | <b>1880 m / 1610 m, Ø77mm / 83 mm wire rope</b>  |
| Towing drum starboard side                   | <b>1880 m / 1610 m, 77 mm / Ø83 mm wire rope</b>   |
| AH drum:                                     | <b>Ø77 mm / Ø83 mm wire rope<br/>5490 m / 4730 m wire rope</b>   |
| Storage Drums:                               |  |
| Port Side Drum wire capacity                 | <b>1400 m - Ø77 mm</b>   |
| Middle storage Drum wire capacity            | <b>1435 m - Ø77 mm</b>   |
| Starboard storage Drum wire capacity         | <b>1830 m - Ø77 mm</b>   |
| Port and Stbd forward chain lockers capacity | <b>2 x 104 t (for ballasting)</b>  |
| Port and Stbd Aft chain lockers capacity     | <b>2 x 101 t (for ballasting)</b>  |
| 4xChain lockers for chain loading            | <b>Ø70 mm-900m(for chain load)<br/>Ø76 mm-750m(for chain load)</b>   |
| 2 x Tagger winches SWL -12t.                 | <b>Ø26 mm - 100 m</b>  |
| 2 x Stern Capstans SWL-10t                   | <b>Ø22 mm - 50 m</b>   |

### TOWING PINS

|       |                |
|-------|----------------|
| Size: | <b>Ø500 mm</b> |
| SWL   | <b>240 t</b>   |

### STERN ROLLER

|       |                          |
|-------|--------------------------|
| Size: | <b>length 5 m / Ø3 m</b> |
| SWL   | <b>500 t</b>             |

### DECK CRANE

|                |                                    |
|----------------|------------------------------------|
| Forward CRANE  |                                    |
| Manufacturer   | <b>1 x TTS-Norlift AS</b>          |
| SWL and radius | <b>4 t x 12 m / 2.5 t x 15.5 m</b> |

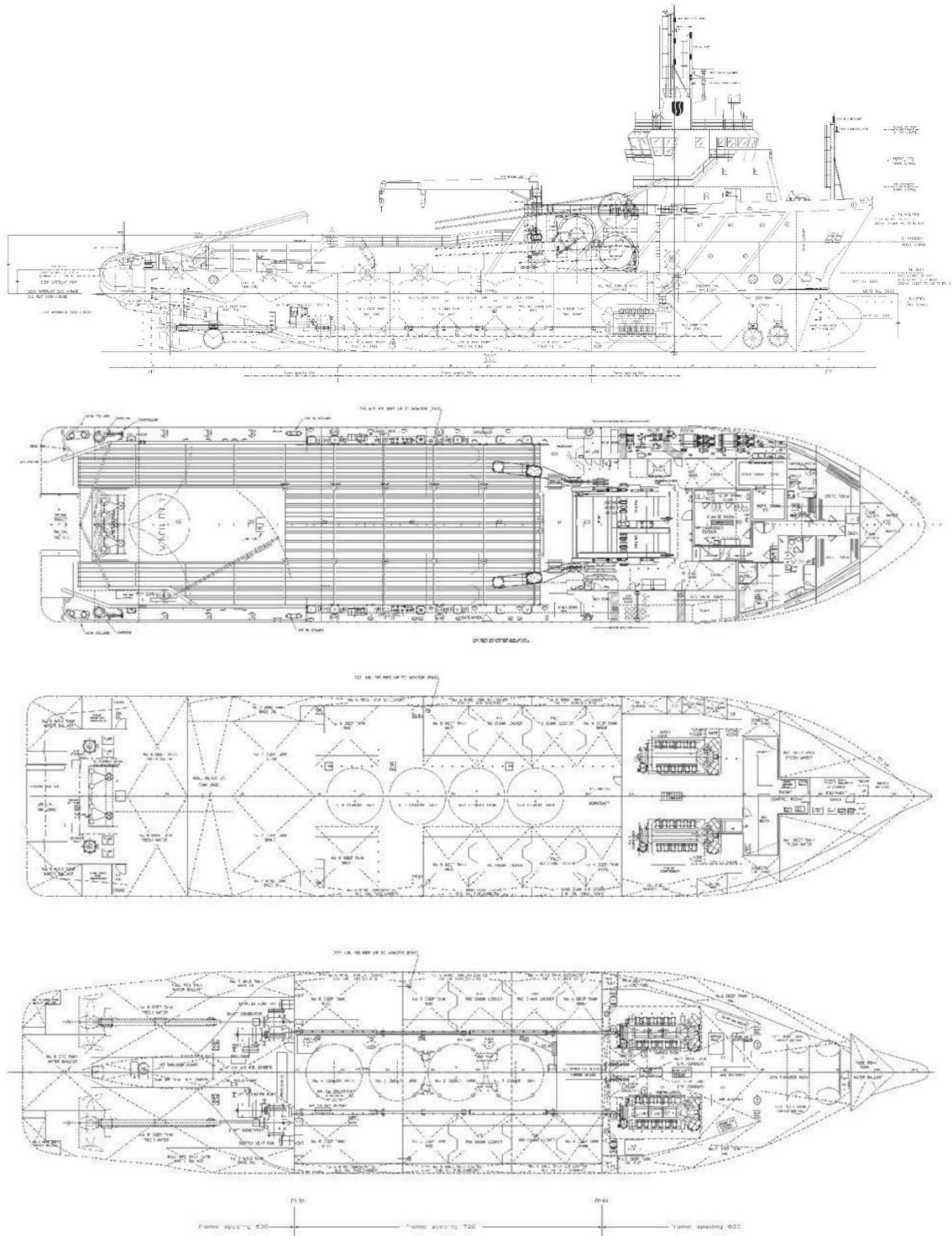
### AFT CRANE

|                |                                 |
|----------------|---------------------------------|
| Manufacturer   | <b>Palfinger marine folding</b> |
| SWL and radius | <b>1.5 t x 9 m</b>              |

### VESSEL SPECIFIC CHARACTERISTICS

Islay is a 2002 built DP 0 offshore vessel, with 172 t bollard pull and space for over 5000 meters of 77 mm wire on the main drum, she is one of the largest AHTSV's operating in the Caspian region. Specifically built for offshore operations, the Islay can tow, transport containerized cargo, bulk materials (mud, cement, brine etc.), act as an ROV platform or lay and/or recover anchors. Used extensively

during the Shah Deniz 2 pipeline installation project in water depths up to 150 m for a wide variety of roles.



38 A, N.Aliyev street  
 AZ1025 Baku, Azerbaijan  
 T: +994 12 464 15 31 / 32  
 E: info@caspmarine.com  
 W: www.caspmarine.com