

GULUSTAN

Crew Boat / 54 Pax / Max 50 tons
deck cargo



GENERAL DATA

Type	Crew boat
Year built / builder	2010, Topaz Shipbuilding, Fujairah, UAE
Class	(RMRS) KM ★ R2
Flag	Azerbaijan
Port of registry	Baku
Call sign	4JNZ
IMO number	9581538

PIPE LAY CAPABILITIES

Length overall	35.0 m
Breadth	7.50 m
Summer Draft	1.9 m
Max Draft (protruding of propellers)	2.4 m
Freeboard at Summer Draft	1.516 m
Gross Tonnage	200 t
Net Tonnage	60 t
Deadweight max	93 t
Deck Working area	134.5 m ²
Deck Strength	2 t/m ²
Deck Cargo Capacity	50 t

CAPACITIES

Fuel Oil	36,246 m ³
Fresh Water	15,666 m ³

PROPULSION

Main Engines	3 x CAT C32 1081kw@2300rpm
Gearboxes	3 x Twin Disc MGX 6650 SC, 2.93:1

Propellers	3 x Teignbridge five blade propellers
Bow thruster	Thrustmaster 37 kW Hydraulic 16TT50L

AUXILIARIES

Auxiliary set	2 x CAT C4.4 107 KVA, 50 Hertz
Generators	415 VAC, 3 phase, 50Hz, 4 wires
Voltage	240 V AC, 1 phase, 50 Hz, 3 wires
Frequency	24 V DC circuit

SPEED

Maximum	16.5 knots
Economical	11 knots

FUEL CONSUMPTION PER DAY

Full Speed	9 m ³
Economical	6.6 m ³

NAVIGATION EQUIPMENT

Radar	1 x Koden Radar
Echo Sounder	1 x F-3000W
Auto Pilot	1 x ALPHASEAPILOT MFC
Doppler Log	1 x NAVIKNOT 450 D
Navtex receiver	1 x Model NT-2000
GPS	1 x GPS plotter HGP 660

COMMUNICATION EQUIPMENT

MF/HF Transceiver	Sailor CU5100 MF/HF Control Unit
GMDSS	SS 1 x INMARSAT MMSI 423335100, Inmarsat C, Area 1
VHF	1 x ICOM M-604, 1 x SAMYUNG STR-6000A

LIFESAVING APPLIANCES

Life Rafts	6 x 25 man
Lifejackets	69 (2 pcs for personnel on watch)
Immersion Suits	10 pcs
Rescue Boat	1 x 6 man

FIFI EQUIPMENT

Fixed system	CO2
BA sets	x2

ACCOMMODATION

Cabins: Crew cabins	5 cabins. 2 single, 3 double cabins
Berth (Total)	8
Crew	8 persons
Passengers	54 persons

MOORING EQUIPMENT

Anchor	2 x Super High Holding Power 136.8 kg
Anchor chain	Grade 2 stud chain, breaking strength 151kN
Anchor winch	2 x HHAW 15-16, reel type, electro hydraulic

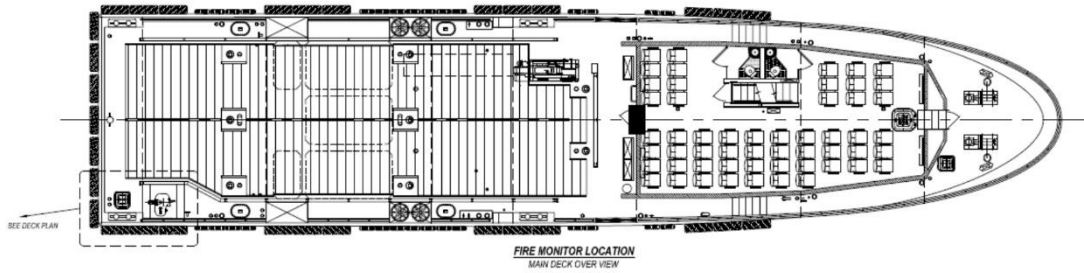
CRANE

	1 x FASSI 1.075 T @ 10.05m
--	-----------------------------------

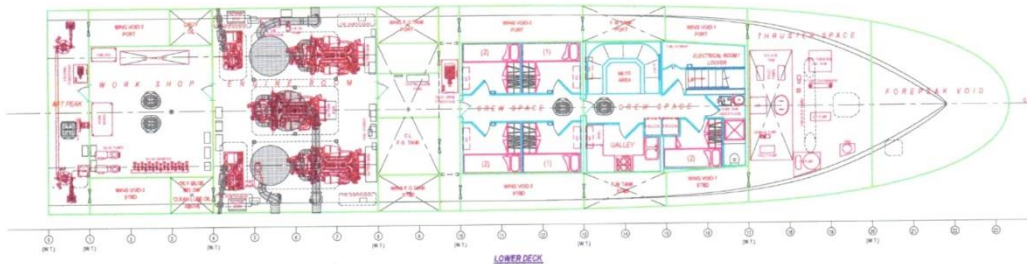
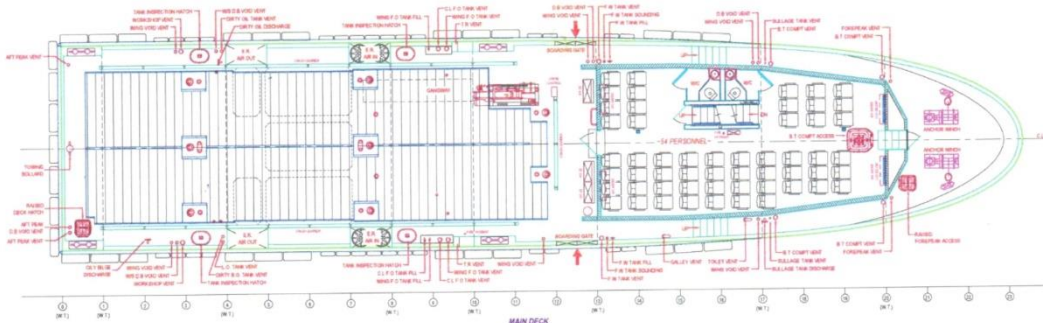
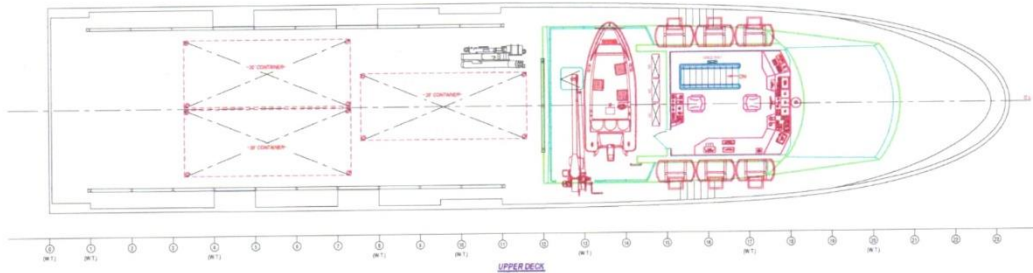
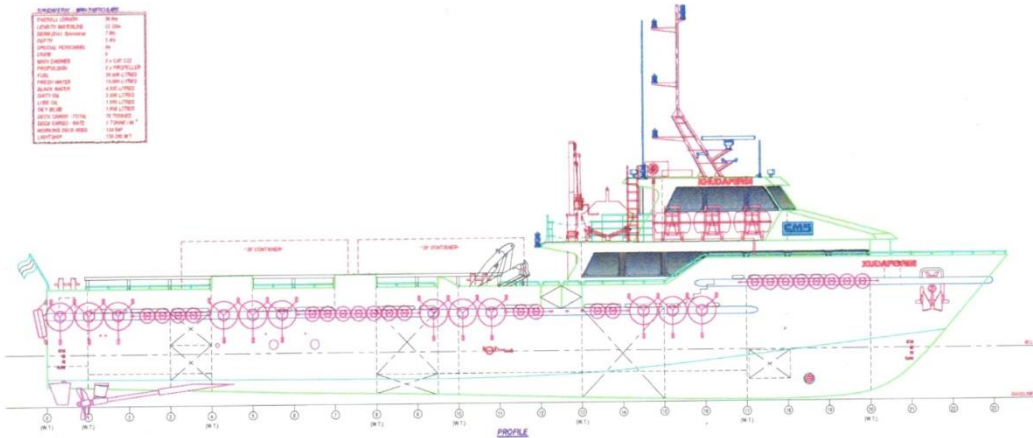
VESSEL SPECIFIC CHARACTERISTICS

"Gulustan" is a multipurpose vessel, able to transport 54 passengers plus crew and up to 50 tons of deck cargo at maximum speed of 16.5 knots. The knuckle / HIAB boom crane installed mid-ships on the port side allows materials to be quickly and easily transferred to or from the vessel. The deck area has been so arranged that 3 standard 20" containers can be carried. Passengers are seated in a dedicated lounge in airline style seats and provided with an AV entertainment system so safety briefings can be observed prior to arriving at destination. Passenger transfer to installation can be achieved by Frog 3, basket transfer or direct access. Three fixed pitch propellers and additional bow tunnel thruster allowing excellent maneuverability and station keeping potential.

Additionally the Gulustan is equipped with an engine driven (middle engine) firefighting pump supplying a single monitor positioned on the stbd aft quarter, the pump supplies 600 m³/hr. at 10 bar giving a reach of 110 meters. Highlighted by the red circle below.



ITEM NO.	DESCRIPTION	QTY
1	PROPULSION SYSTEM	10 TON
2	ENGINE ROOM	12 TON
3	WATER TANK	7 TON
4	WATER TANK	5 TON
5	WATER TANK	5 TON
6	WATER TANK	5 TON
7	WATER TANK	5 TON
8	WATER TANK	5 TON
9	WATER TANK	5 TON
10	WATER TANK	5 TON
11	WATER TANK	5 TON
12	WATER TANK	5 TON
13	WATER TANK	5 TON
14	WATER TANK	5 TON
15	WATER TANK	5 TON
16	WATER TANK	5 TON
17	WATER TANK	5 TON
18	WATER TANK	5 TON
19	WATER TANK	5 TON
20	WATER TANK	5 TON
21	WATER TANK	5 TON
22	WATER TANK	5 TON
23	WATER TANK	5 TON
24	WATER TANK	5 TON
25	WATER TANK	5 TON
26	WATER TANK	5 TON
27	WATER TANK	5 TON
28	WATER TANK	5 TON
29	WATER TANK	5 TON
30	WATER TANK	5 TON



38 A, N.Aliyev street
 AZ1025 Baku, Azerbaijan
 T: +994 12 464 15 31 / 32
 E: info@caspmarine.com
 W: www.caspmarine.com

