

# SAVALAN

UT755 XL / 5580kW / Dp2  
/ Platform Supply Vessel



## GENERAL DATA

Type	Platform Supply Vessel
Design	UT755 XL
Shipyard	Rosetti Marino S.P.A., Italy
Year built	2011
Class	ABS
Flag	Azerbaijan
Port of registry/Call sign	Baku/4JSU
IMO	9499670

## DIMENSIONS

Length overall	75 m
Breadth	16.0 m
Summer Load Draft	5.85 m
Draft max.	5.85 m

## CARGO CARRYING CAPACITY

Gross Tonnage	2215
Net Tonnage	757
Deadweight	3133 mt
Deck Dimension	53 x 13.5 m
Deck Area	600 m <sup>2</sup>
Point load	5 mt
Deck load	1500 mt

## TANK CAPACITIES

Fuel oil	859 m <sup>3</sup> at 100%
Drill / Ballast Water	812 m <sup>3</sup> at 100%
Fresh Water	686 m <sup>3</sup> at 100%
Base Oil	208 m <sup>3</sup> at 100%
Brine	291 m <sup>3</sup> at 100%
Dry Bulk	320 m <sup>3</sup> at 100%
Oil based Mud	593 m <sup>3</sup> at 100%
Sewage	116 m <sup>3</sup> at 100%
Endurance	6 days

## SPEED

Maximum	14 kts
Economical	8.0 kts

## FUEL CONSUMPTION

Maximum	24 t / day
Economical	12 t / day
DP mode	7 t / day

## MACHINERY & PROPULSION

Main engines	2 x 3741 BHP GE 16V228
Bow thrusters	2 x 885 BHP Rolls-Royce TT 660 kW 1650 DPN CP
Stern thrusters	2 x 800 BHP Rolls-Royce TT 590 kW 1650 DPN CP
Shaft alternators	2 x 1800 kW
Diesel generator	2 x 375 kVA DEUTZ BF6M1015
Emergency generator	1 x 150 kVA DEUTZ BF6M1013
Rudders	2 Rolls Royce High Lift

## FIREFIGHTING

FIFI CLASS	1
Fixed system	CO <sub>2</sub> Eng Room. ECR. Workshop
FiFi Monitors	x 2
BA Scott (BAFOS)	x 6
EBBD	x 10
DP	DP2
DP System	Kongsberg K POS DP21
DP Class	DP2
DP References Systems	1 x Hipap 500 Accoustic Pos. 1 x Radius 1000 Radar Pos. 2 x DGPS VERIPOS LD5 IMU 1 x SceneScan

## LIFESAVING APPLAINCES

Life Raft	4 x 20
Lifejackets	27 pcs
Life-buoys	8 pcs + 2 pcs on DC
Immersion Suits	24 pcs

## COMMUNICATION EQUIPMENT

2 x Inmarsat-C
7 x Motorola DP1400 – Handheld VHF
CU 5100 MF/HF
2 x Motorola GP 340 – Handheld UHF
1 x MOTOROLA XTL 1500
1 x KU Band Satellite Communications System
1 x VHF MARINE IC-M421
1 x SAILOR 6222 VHF DSC
1 x Jotron Tron 40SMkII EPIRB
1 x SAILOR RT5020 VHF DSC DUPLEX
1 x Sailor VHF C 4900 External communication according to GMDSS
1 x KU Band Satellite Communications System
1 x Fleetbroadband 500

## NAVIGATION EQUIPMENT

1 x Sperry Marine Vision Master FT X-Band Radar, ARPA
1 x Sperry Marine Vision Master FT S-Band Radar, ARPA
1 x GPS Furuno GP-170
1 x GPS SIMRAD MX510 Navigation system
3 x Sperry Marine navigation x MK digital gyrocompass
1 x Sperry Navipilot 4000 Autopilot
1 x JRC JHS 182 AIS
1 x Sperry Echosounder ES 5100
1 x Sperry Naviknot Speed Log
2 x Wind Speed Director OMC139D
1 x Northrop Grumman 4863 Magnetic Compass
1 x NCR-333 Navtex receiver

## DECK EQUIPMENT

Deck crane	1 x 6mt - 16m max.boom.
Tugger winches	2 x 10mt
Windlass/Capstans	2 x 8mt
RB	Neptune NP 160 RB Waterjet - 6 man
DC	Delta PHANTOM H.I.N - 15 man (persons) Model: BG- DPS14404K9

## ACCOMMODATION

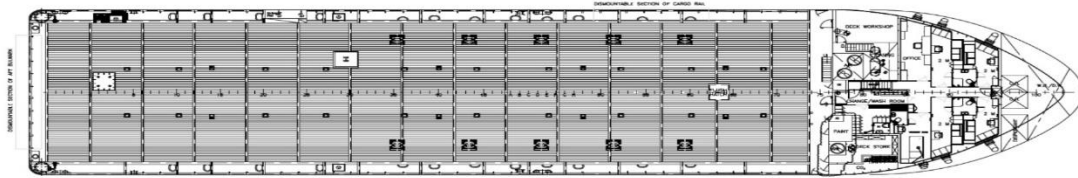
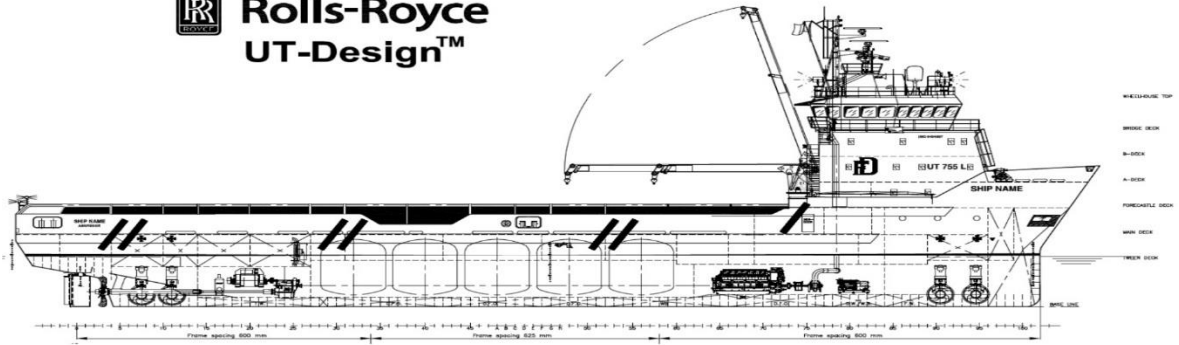
Cabins capacity	12 cabins x 1 man 4 cabins x 2 man
Total POB	20 persons
Crew (minimum manning)	9 persons
Crew (normal operation)	16 persons
LSE	20 persons
Hospital	x 1
Client office	x 1

## UNIQUE VESSEL CHARACTERISTICS

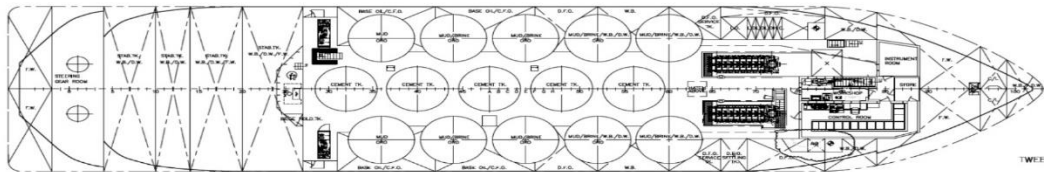
The Savalan is a modern (2011) Italian built PSV with DP2 capability and FiFi 1 system. The vessel has cargo deck capacity of 600 m<sup>2</sup> and a maximum load of 1500 mt. In addition the Savalan is able to transport drill water, cement, brine and mud in dedicated tanks



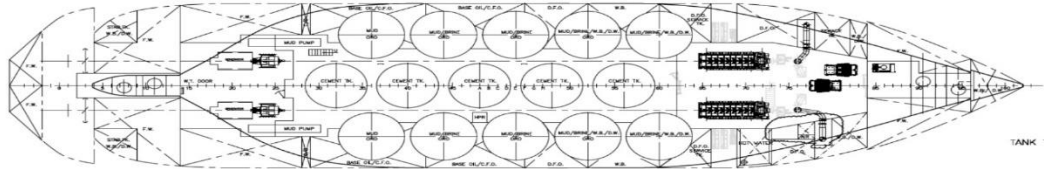
# Rolls-Royce UT-Design™



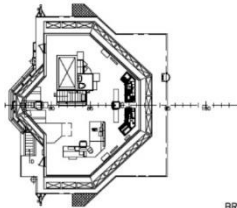
MAIN DECK



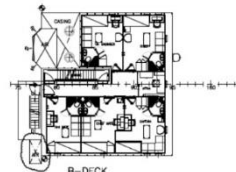
TWEEN DECK



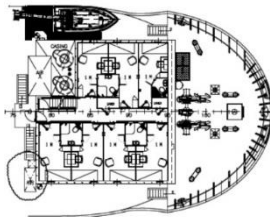
TANK TOP



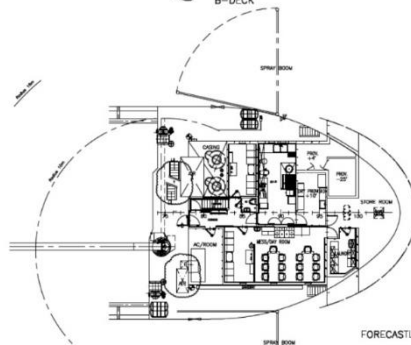
BRIDGE DECK



B-DECK



A-DECK



FORECASTLE DECK



38 A, N.Aliyev street  
AZ1025 Baku, Azerbaijan  
T: +994 12 464 15 31 / 32  
E: info@caspmarine.com  
W: www.caspmarine.com

